



Medium Chess Puzzle # 0082

By

G Bud Games
<https://gbud.in>

December 5, 2021

Contents

Medium Chess puzzle # 0082 - Mate in 2 moves	4
Medium chess puzzle 0082	4
Solution to medium chess puzzle 0082	5
Solution 1	5
Right moves for the solution to the medium chess puzzle 0082	7
Explanation for the moves	7
Categories of medium chess puzzle 0082	8
medium chess puzzle 0082 chart	8
How to view the solution to medium chess puzzle 0082	10
How to get help for moves in the medium chess puzzle 0082	11
Play chess for free	12

List of Figures

1	Solve this medium chess puzzle 0082. Mate in 2 moves @ https://gbud.in/g05nhb2	4
2	Solve this medium chess puzzle online with solution @ https://gbud.in/g05nhb2	4
3	Initial board position of medium chess puzzle 0082	5
4	b5 - This opens the queens attack on the opponent's bishop. Opponent's bishop can not capture your queen since Your rook pins opponent's bishop to their king. It can not move from its position.	6
5	Kg2 - opponent's king is trying to un-pin itself	6
6	Qxg1# - Your queen captures opponents bishop and and checkmate. Opponent's king can't move since no free squares are available as it is blocked by friendly pieces.. This is how you can mate in 2 moves.	7
7	medium chess puzzle 82 chart 1	8
8	medium chess puzzle 82 chart 2	9
9	medium chess puzzle 82 chart 3	9
10	medium chess puzzle 82 chart 4	10
11	Click the solution button to view solutions @ https://gbud.in/g05nhb2	10
12	Click the help button to get help on next move @ https://gbud.in/g05nhb2	11
13	Solve more medium puzzles @ https://gbud.in/chsmdpz	11
14	Solve other puzzles @ https://gbud.in/chsgppz	11

15	Play chess online for free. Solve puzzles and play with friends	12
16	Solve this puzzle online by scanning this QR code or go to the link below	13

Medium Chess puzzle # 0082 - Mate in 2 moves

Solve this medium chess puzzle and improve your chess games through improvement of your chess strategies and chess tactics.

Puzzle No : 0082

Difficulty level : medium

Description : Mate in 2 moves

Next Move : Black

Player level : Intermediate

Short URL for puzzle : <https://gbud.in/g05nhb2>

Medium chess puzzle 0082

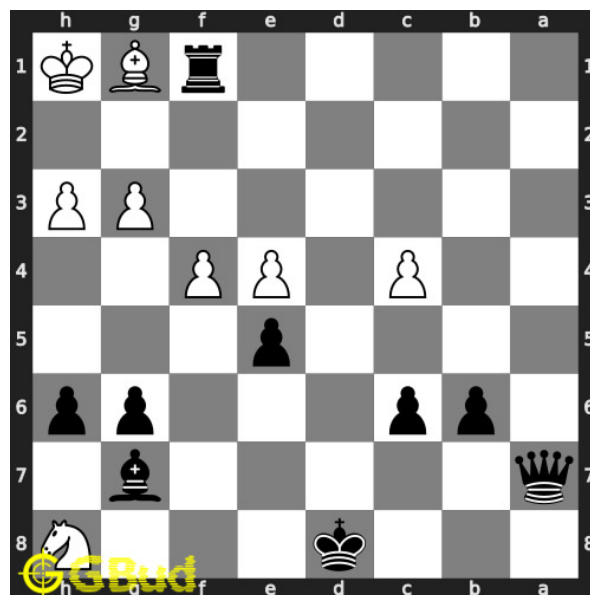


Figure 1: Solve this medium chess puzzle 0082. Mate in 2 moves @ <https://gbud.in/g05nhb2>



Figure 2: Solve this medium chess puzzle online with solution @ <https://gbud.in/g05nhb2>

Dont forget to check out [chess puzzles](#), [easy chess puzzles](#), [medium chess puzzles](#), [hard chess puzzles](#) and [chess puzzles collections](#) .

Solution to medium chess puzzle 0082

At this puzzle, next [move](#) is by [Black](#). The objective of the puzzle is to mate in 2 moves.

See the interactive solution at the [puzzle page](#)

Solution 1

Initial board position This is the initial board position of medium chess puzzle 0082.

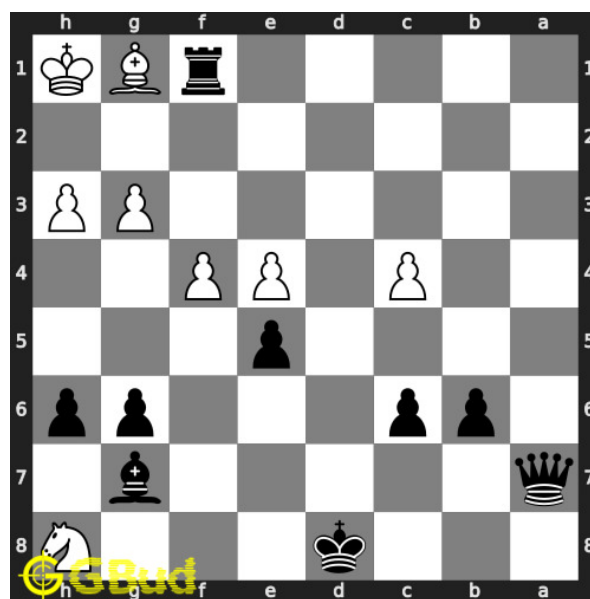


Figure 3: Initial board position of medium chess puzzle 0082

Move 1 Move by black

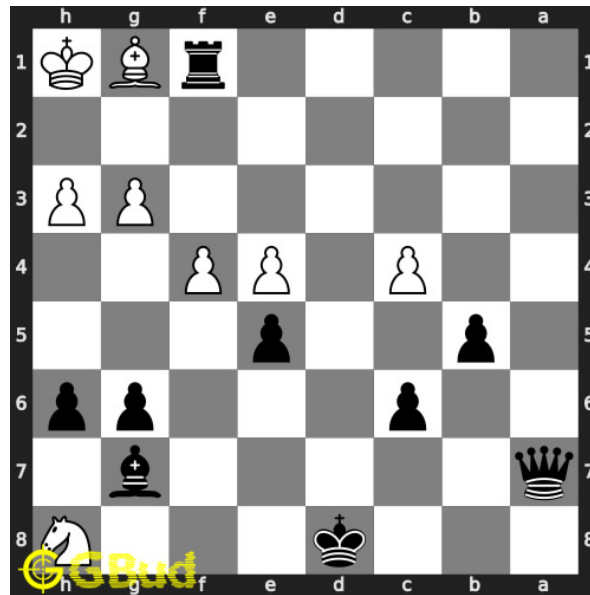


Figure 4: b5 - This opens the queens attack on the opponent's bishop. Opponent's bishop can not capture your queen since Your rook pins opponent's bishop to their king. It can not move from its position.

Move 2 Move by white

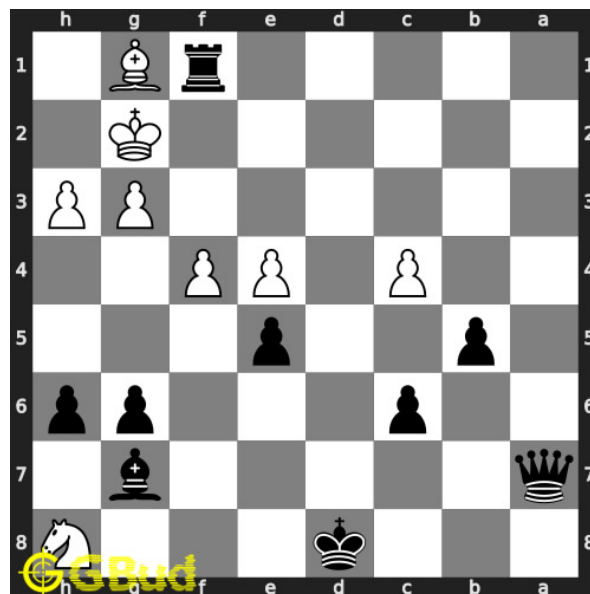


Figure 5: Kg2 - opponent's king is trying to un-pin itself

Move 3 Move by black

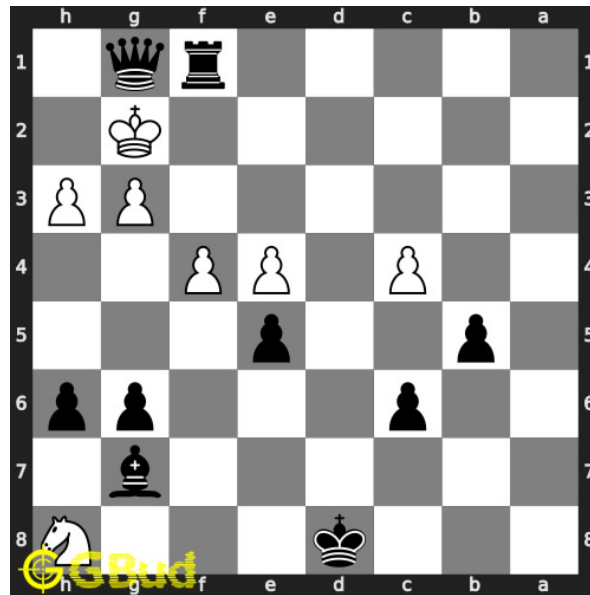


Figure 6: Qxg1# - Your queen captures opponents bishop and and checkmate. Opponent's king can't move since no free squares are available as it is blocked by friendly pieces.. This is how you can mate in 2 moves.

Right moves for the solution to the medium chess puzzle 0082

Based on the objective of the puzzle, you have to make the right moves. Following are the right moves

1. b5, Qxg1#

Explanation for the moves

1. b5 - This opens the queens attack on the opponent's bishop. Opponent's bishop can not capture your queen since Your rook pins opponent's bishop to their king. It can not move from its position.
2. Kg2 - opponent's king is trying to un-pin itself
3. Qxg1# - Your queen captures opponents bishop and and checkmate. Opponent's king can't move since no free squares are available as it is blocked by friendly pieces.. This is how you can mate in 2 moves.
4. For right move - You gave no options for the opponent to escape. Good strategy
5. For wrong move - You failed to use the pin created by your rook. Try again

Categories of medium chess puzzle 0082

This medium chess puzzle falls in these categories.

1. [Medium chess puzzles](#)
2. [Mate in 2 puzzles in chess](#)
3. [Endgame puzzles in chess](#)
4. [Strategy puzzles in chess](#)
5. [Pin puzzles in chess](#)
6. [Pawn puzzles in chess](#)
7. [Queen puzzles in chess](#)

medium chess puzzle 0082 chart



Figure 7: medium chess puzzle 82 chart 1



Figure 8: medium chess puzzle 82 chart 2

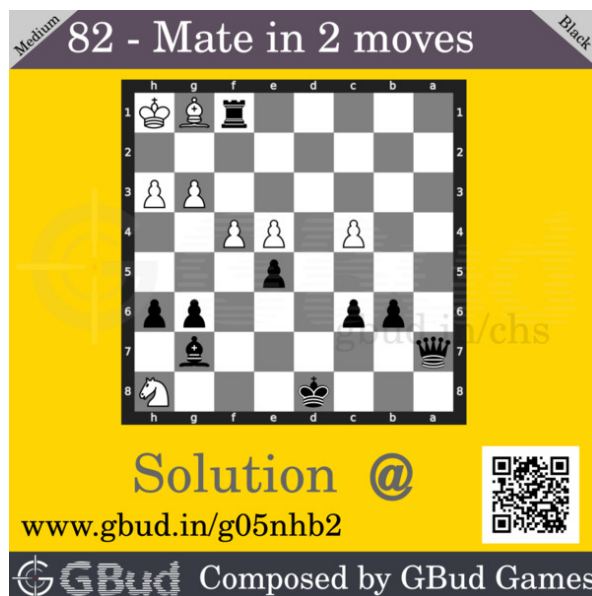


Figure 9: medium chess puzzle 82 chart 3

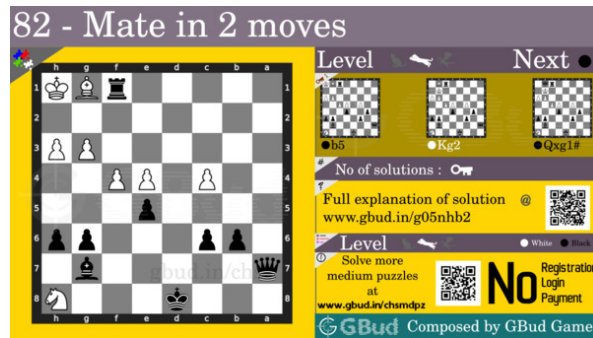


Figure 10: medium chess puzzle 82 chart 4

How to view the solution to medium chess puzzle 0082

To view the [solution to this puzzle](#), follow the steps given below

1. Go to the [puzzle page](#)
2. Click the solution button (Key as shown [below](#)) to view the solution



Figure 11: Click the solution button to view solutions @ <https://gbud.in/g05nhb2>

How to get help for moves in the medium chess puzzle 0082

To get help or the possible next moves in the puzzle, , follow the steps given below

1. Go to the [puzzle page](#)
2. Click the help button (exclamation mark as shown [below](#)) to get help or suggestion on next possible [move](#)



Figure 12: Click the help button to get help on next move @ <https://gbud.in/g05nhb2>



Figure 13: Solve more medium puzzles @ <https://gbud.in/chsmdpz>



Figure 14: Solve other puzzles @ <https://gbud.in/chsgppz>

Play chess for free

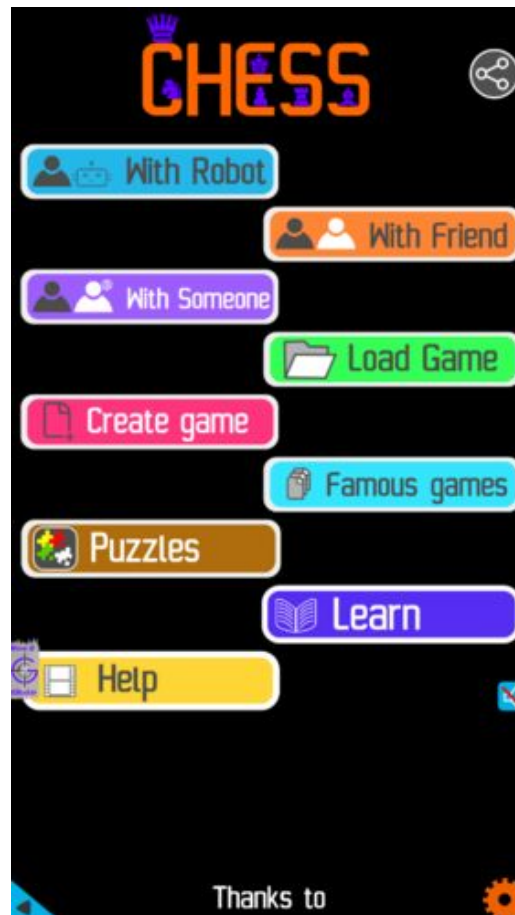


Figure 15: Play chess online for free. Solve puzzles and play with friends

Play chess for free at <https://gbud.in/chs>

We present you a platform to play chess online with friends for free. No need to install any app. You can play chess for free without registration or login.

Simple. You can do several chess related activities.

1. [solve chess puzzles](#)
2. [learn about chess](#)
3. [play chess with computer](#)
4. [play chess with friend](#)
5. [create your own chess games](#)

6. [fen viewer](#)
7. [fen editor](#)
8. [fen generator](#)
9. [pgn viewer](#)
10. [chess board editor](#)
11. [view famous chess games.](#)



Figure 16: Solve this puzzle online by scanning this QR code or go to the link below

<https://gbud.in/g05nhb2>

Read the latest article on Medium Chess puzzle # 0082 - Mate in 2 moves by scanning this QR code or click the link

Previous article : [« Medium Chess puzzle # 0081 - Mate in 2 moves](#)

Next article : [Medium Chess puzzle # 0083 - Mate in 2 moves »](#)

[Back to top](#)

[Contact Us](#)